

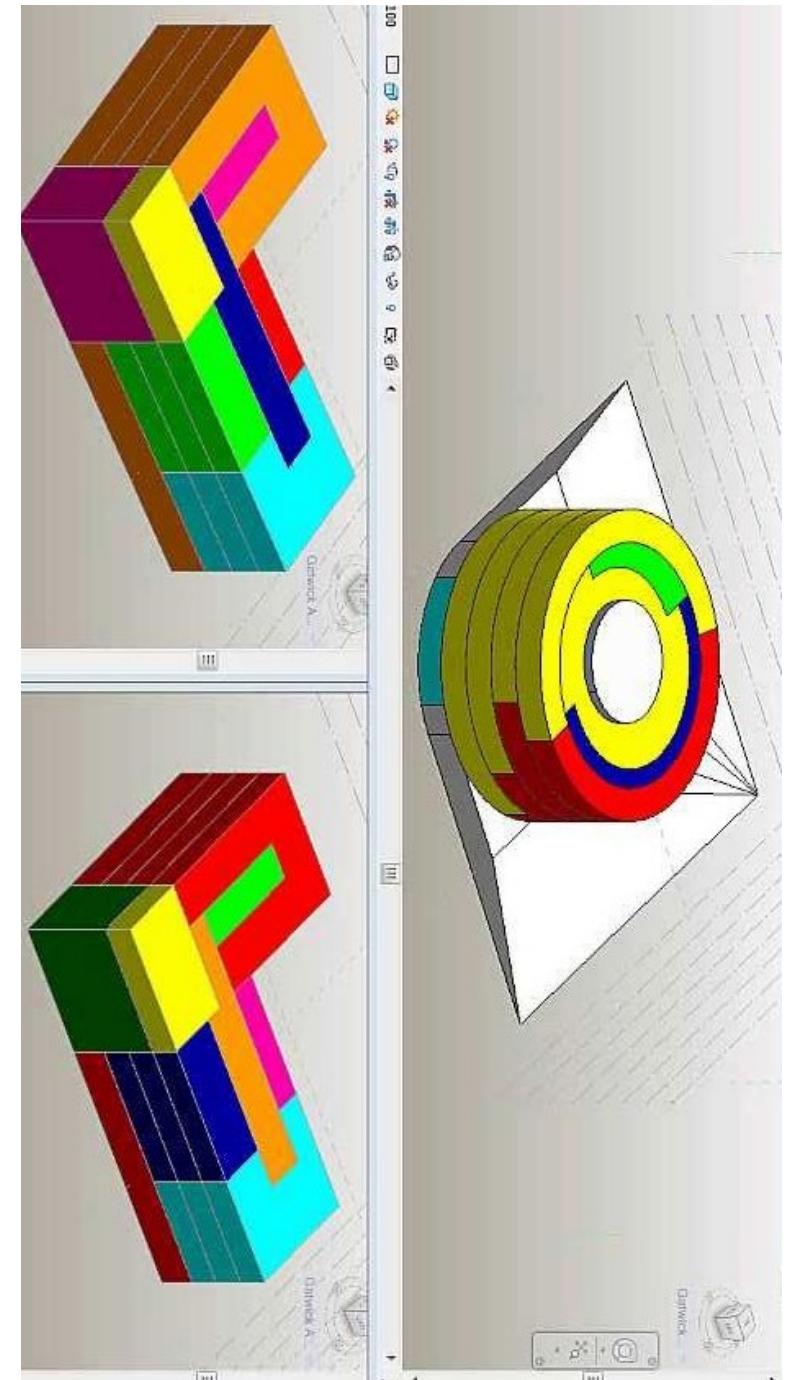


DOA, Director Patrick Cates discusses a bold new vision for the State Library space – August of 2017



# Major Tasks

1. An analysis of key partner roles, responsibilities, risks and rewards;
2. Supply analysis of program aspirations
3. Recommendations for space utilization
4. Include key indicators of success moving forward from a collections centered library to a learning centered library!







# NEVADA KNOWLEDGE AND INNOVATION CENTER CONCEPTUAL SPACE PLAN

## ABSTRACT

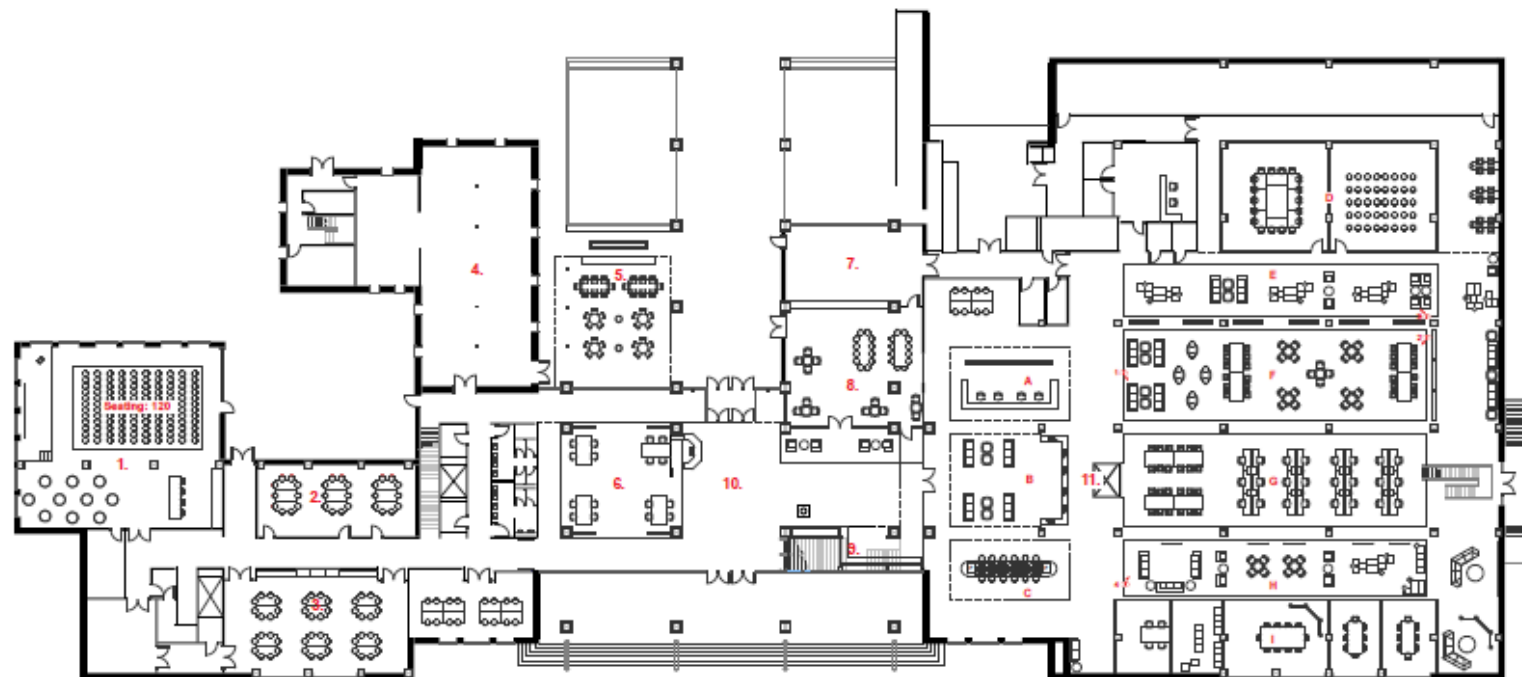
*Knowledge and innovation require information and a workforce able to process and to create knowledge from that information. The proposed Knowledge and Innovation Center is about rethinking purpose, reimagining possibility, and refocusing resources to make State Government ever-more effective for Nevada and Nevadans.*

**Ruth Metz Associates**

December 31, 2017

# NEVADA STATE LIBRARY AND ARCHIVES

## KNOWLEDGE & INNOVATION CENTER



### 1. Conference / Training Room

The Training Room is a flexible design with options accommodating 120 people in presentation style seating, with standing tables for additional persons; or group tables for interactive training. A stage elevated 12"-0" and large projector make this room ideal for formal training and presentations.

### 2. Computer Lab / Meeting Room

This meeting room is a flexible space, integrating emerging technologies, for training or conferencing.

### 3. Training Room

This training room is a flexible space, integrating emerging technologies, for training or conferencing.

### 4. Gallery Space

The open layout allows the Gallery Space to be used for exhibitions, both temporary and long term.

### 5. Patio

The updated Patio adds extended and outdoor seating for the adjacent Cafe whilst providing diverse seating options, a translucent canopy, fireplace, and heat lamps.

### 6. Collaborative Workspace

The Collaborative Workspace offers 4 group seating set-ups with monitors for each table and view of the large LED screen to the north.

### 7. Food Prep Area

The Food Prep Area services the adjacent cafe, providing area to warm and prepare food, such as sandwiches and pastries.

### 8. Cafe Seating

The Cafe provides employees and guests with quick food options as well as diverse seating options for informal meeting or individual breaks.

### 9. Lobby Stair

The Lobby Stair are a monumental stair, inviting people to explore the collections on the second floor while adding visual intrigue to the Lobby. Meanwhile, planters and functional seating bring life and activity below.

### 10. Lobby

The Lobby is the centerpoint of the NSLAPL and a pathway to all activities, as well as a point of visual continuity between them. The Lobby welcomes guest with a snapshot of information, activity, and history - all of which expand beyond the boundaries of the atrium. The Lobby will also feature a reception and information desk to welcome and guide guests to what they are looking for.

### 11. Library / Learning Commons

The Learning Commons of the first floor is an active zone for employees and guests to work individually or in groups. The layout provides a range of configurations for the array of situational needs, while incorporating private technology rooms for collaboration, presentation space, individual research stations, a computer station, and information desk for assistance.

### A RECEPTION / INFORMATION DESK

### B KIOSK

### C COMPUTER STATION

### D LARGE COLLABORATION ROOMS

### E FLEX SEATING / READING SPACE

### F FLEX SEATING / INTERACTION SPACE

### G RESEARCH ZONE

### H FLEX SEATING / COLLABORATION SPACE

### I SMALL COLLABORATION ROOMS

## OVERALL FLOOR PLAN

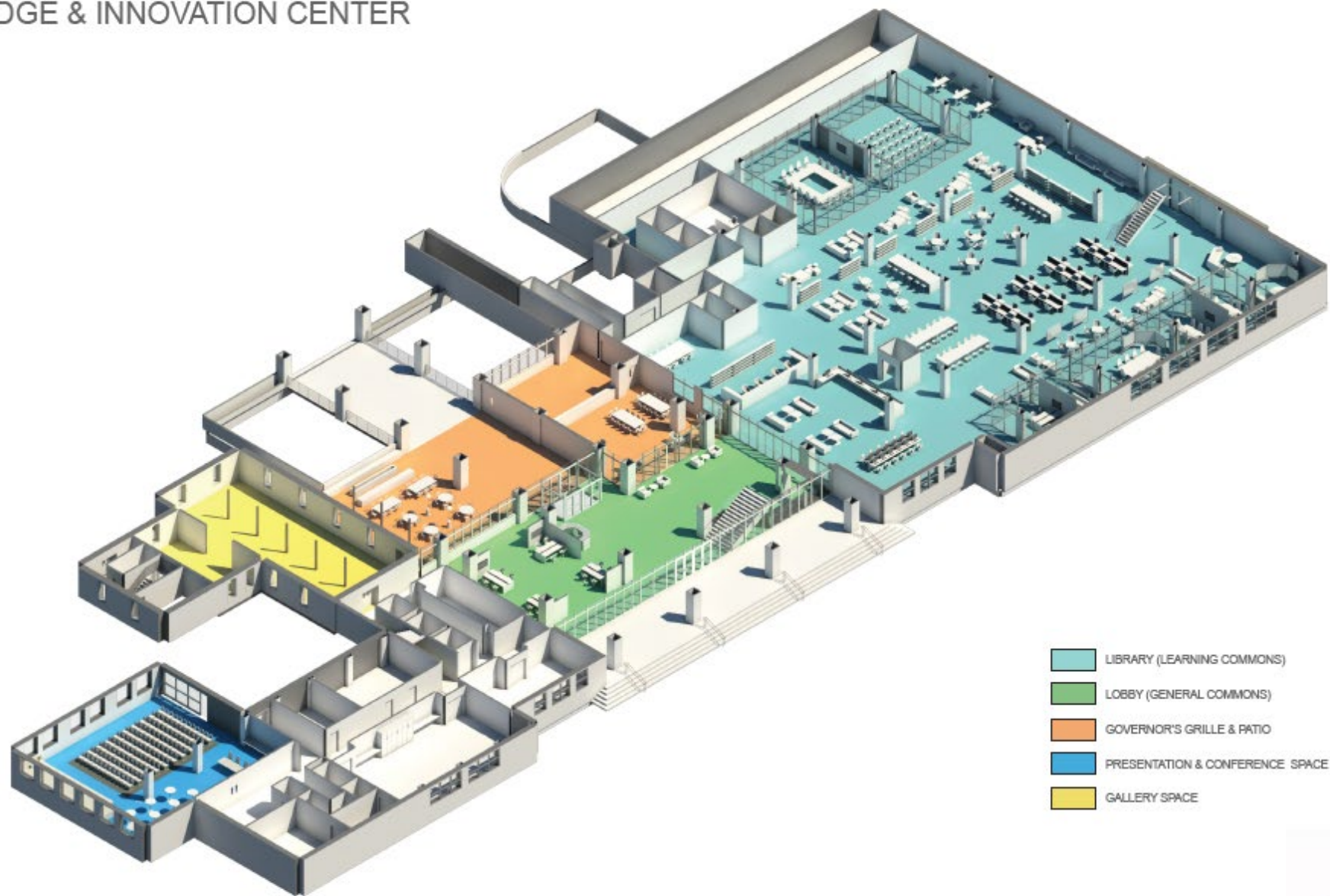
SCALE: 1/16" = 1'-0"

tsk



# NEVADA STATE LIBRARY AND ARCHIVES

KNOWLEDGE & INNOVATION CENTER



- LIBRARY (LEARNING COMMONS)
- LOBBY (GENERAL COMMONS)
- GOVERNOR'S GRILLE & PATIO
- PRESENTATION & CONFERENCE SPACE
- GALLERY SPACE

**3D PERSPECTIVE VIEW - OVERALL FLOOR PLAN**

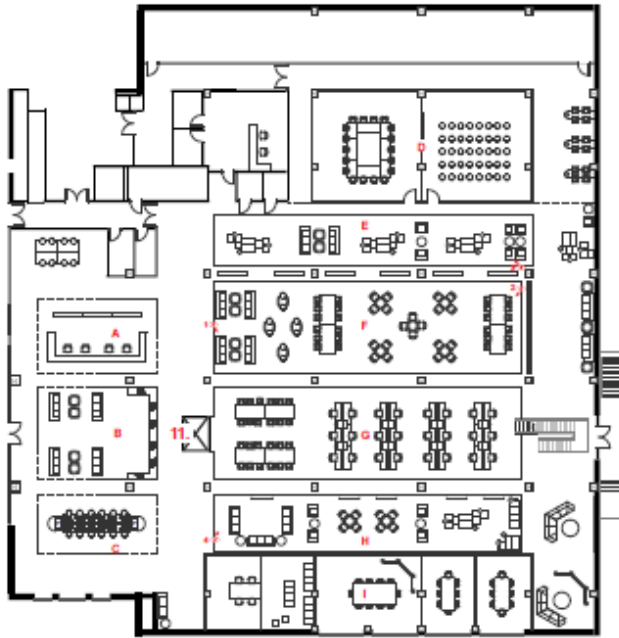
N.T.S. - NOT TO SCALE





# NEVADA STATE LIBRARY AND ARCHIVES

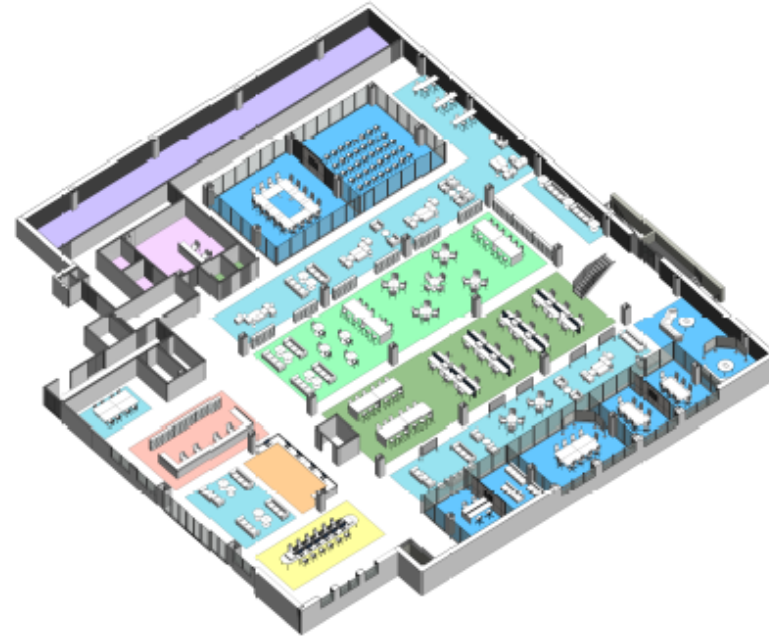
## KNOWLEDGE & INNOVATION CENTER



### Library / Learning Commons

The Learning Commons of the first floor is an active zone for employees and guests to work individually or in groups. The layout provides a range of configurations for the array of situational needs, while incorporating private technology rooms for collaboration, presentation space, individual research stations, a computer station, and information desk for assistance.

- A RECEPTION / INFORMATION DESK
- B KIOSK
- C COMPUTER STATION
- D LARGE COLLABORATION ROOMS
- E FLEX SEATING / READING SPACE
- F FIXED SEATING / INTERACTION SPACE
- G RESEARCH ZONE
- H FLEX SEATING / COLLABORATION SPACE
- I SMALL COLLABORATION ROOMS



- FLEX SEATING
- COLLABORATION SPACE
- FIXED SEATING / WORKSPACE
- RESEARCH SPACE

- PROGRAMMING / PRODUCTION
- MEDIA LIBRARY
- INFORMATION DESK
- SELF-SERVE KIOSK
- COMPUTER STATION

## LIBRARY/LEARNING COMMONS FIRST FLOOR

SCALE: 1/4" = 1'-0"

# NEVADA STATE LIBRARY AND ARCHIVES

KNOWLEDGE & INNOVATION CENTER



3



4

# NEVADA STATE LIBRARY AND ARCHIVES

KNOWLEDGE & INNOVATION CENTER



1



2

**LIBRARY / LEARNING COMMONS**

RENDERS

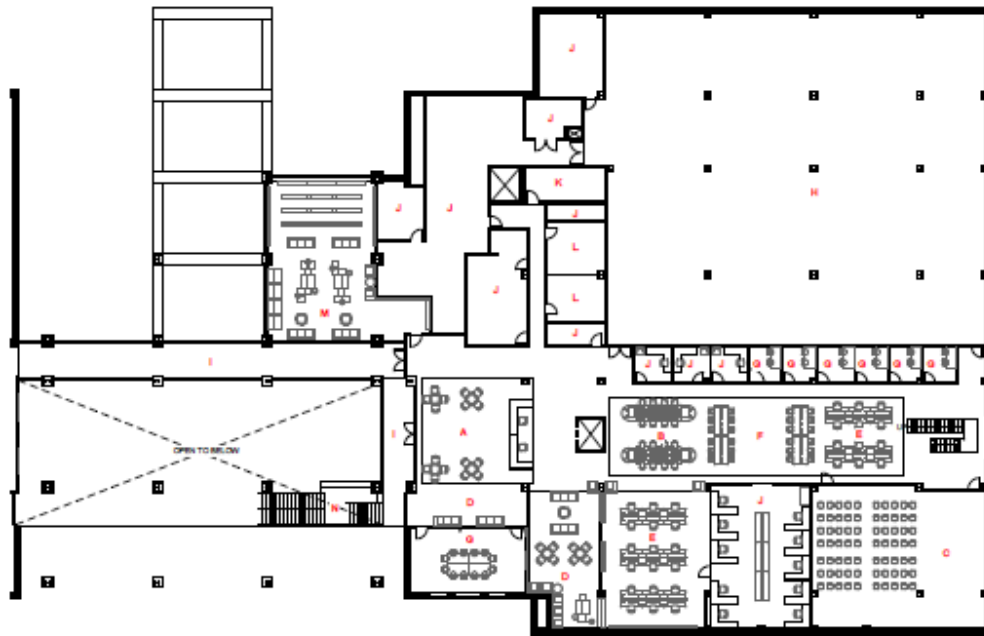
**tsk**





# NEVADA STATE LIBRARY AND ARCHIVES

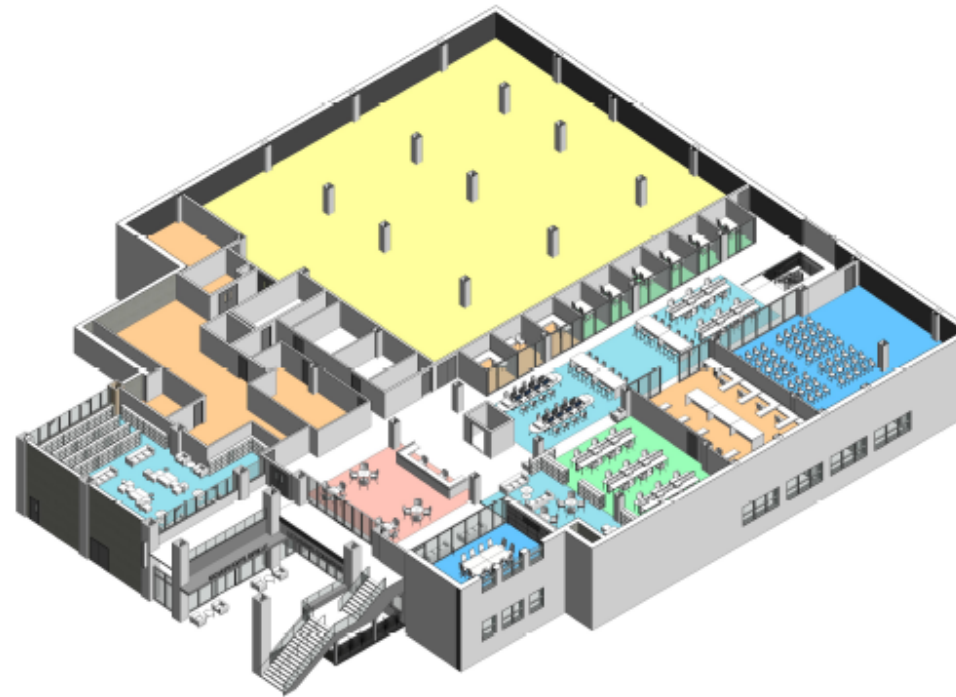
## KNOWLEDGE & INNOVATION CENTER



### Second Floor: Nevada Research, Collections, and Programs

The Second Floor is the research hub of the Knowledge and Innovation Center. This floor also includes various conferencing and flexible presentation spaces. Another main component of the second floor is the archive and storage space for the many collections of the NSLAPR.

- A RECEPTION/INFORMATION DESK
- B COMPUTER STATION
- C LARGE COLLABORATION SPACE
- D FLEX SEATING/READING SPACE
- E RESEARCH ZONE
- F FLEX SEATING/COLLABORATION SPACE
- G SMALL COLLABORATION ROOM
- H ARCHIVES/STORAGE
- I CATWALK/2ND FLOOR ENTRY
- J WORKROOM/STAFF SPACE
- K STAIRWELL
- L RESTROOMS
- M NEVADA COLLECTION ROOM
- N STAIR AND LANDING



- COLLABORATION SPACE
- FLEX SEATING
- RESEARCH SPACE

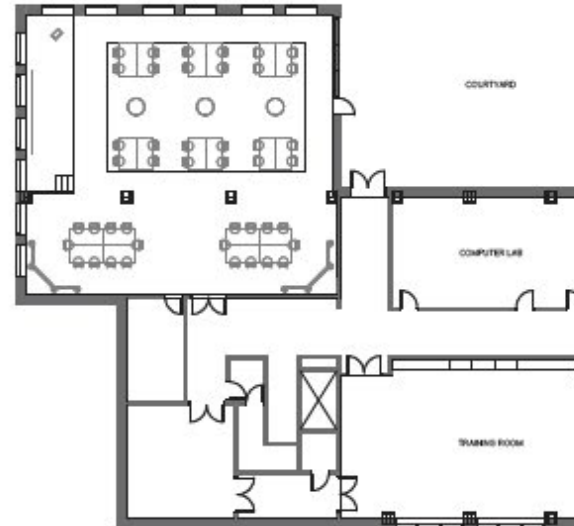
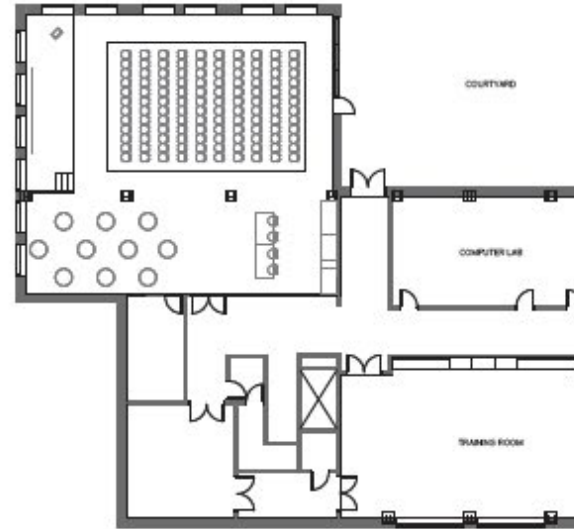
- INFORMATION DESK
- WORKROOM / STAFF SPACE
- ARCHIVES / STORAGE

## LIBRARY/LEARNING COMMONS SECOND FLOOR

SCALE: 1/16" = 1'-0"

# NEVADA STATE LIBRARY AND ARCHIVES

## KNOWLEDGE & INNOVATION CENTER



## TRAINING/CONFERENCE AREA

RENDERERS & FLOOR PLANS



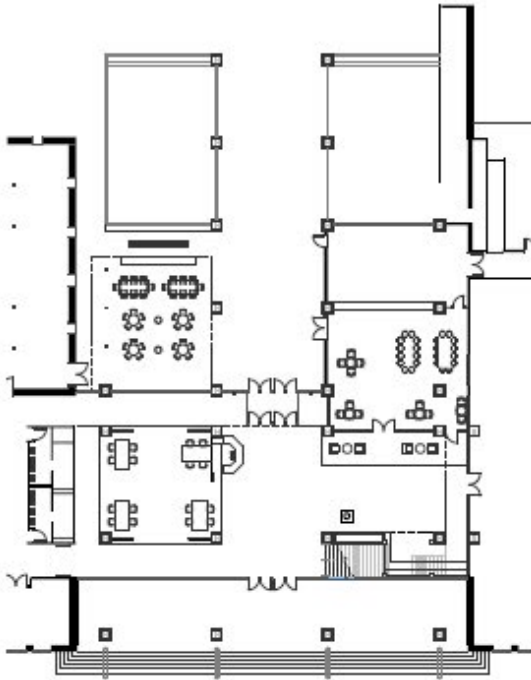
# NEVADA STATE LIBRARY AND ARCHIVES

KNOWLEDGE & INNOVATION CENTER



# NEVADA STATE LIBRARY AND ARCHIVES

## KNOWLEDGE & INNOVATION CENTER



### 10. Lobby

The Lobby is the centerpoint of the NSLA/PR, and a pathway to all activities, as well as a point of visual continuity between them. The Lobby welcomes guests with a snapshot of information, activity, and history - all of which expand beyond the boundaries of the atrium. The Lobby will also feature a reception and information desk to welcome and guide guests to what they are looking for.

